

# BOX CAR CARGO HANDLING SYSTEM

As a customer-focused organization, *TrinityRail's* platform of integrated products and services has been carefully designed to deliver the exact support you need, when and where you need it. We strive to be the premier provider of comprehensive rail transportation services and your best business partner.

*TrinityRail* has partnered with American Refrigerated Express (“ARX”) and U.S. Cargo Systems (USCS) to provide our customers with an innovative transportation solution. This promotes decreased in-transit product loss, lower dunnage costs and a reduced carbon footprint all while improving loading and unloading efficiencies.

## U.S. Cargo Systems

U.S. Cargo Systems (USCS) is a proven worldwide leader in the design and development of Cargo Handling and Aerial Delivery System Technologies. Located in Goldsboro, NC, U.S. Cargo Systems (USCS) is a proven worldwide leader in the design and development of Cargo Handling and Aerial Delivery System Technologies. Renowned for designing to the most stringent requirements, enabling their products to perform in the harshest environments.



**DECREASE YOUR  
ANNUAL CARBON  
FOOTPRINT**



**DECREASE  
YOUR IN-TRANSIT  
PRODUCT LOSS**



**DECREASE  
DUNNAGE COSTS**



**PROMOTES SAFER  
WORK ENVIRONMENT**



## PERFORMANCE FEATURES



190,400 LBS. LOAD  
CAPACITY PER RAILCAR



2HR. OR LESS LOAD  
OPERATION TIME



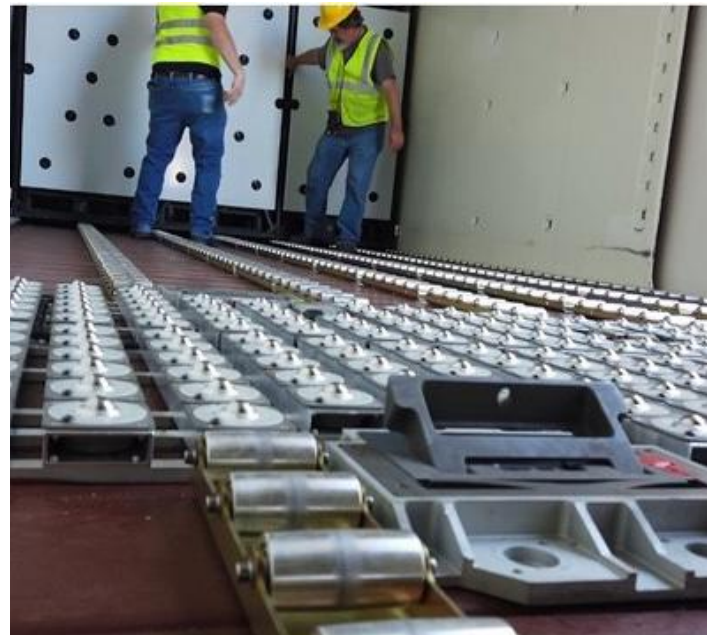
REDUCING DAMAGED  
CARGO AND LOAD  
SHRINKAGE



TWO-PERSON OPERATION  
AND MINIMUM 20-YEAR  
SERVICE LIFE

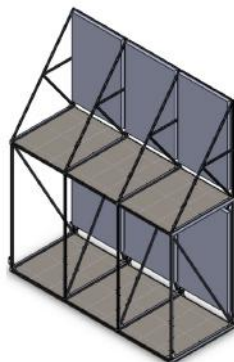
## System

- Semi-powered system installed direct to floor for optimal carriage and restraint of palletized loads
- AC-powered Power Drive Units (PDUs) strategically placed to facilitate
- High density conveyance elements at 4" pitch for low rolling friction for ease of operation
- Heavy-duty attenuated guides for alignment of racks during load and unload operations
- Foot operable locks provide longitudinal restraint of all racks
- Wall mounted restraints maintain rack position during transit
- Doorway restraints to prevent damage to railcar side doors



## Racks

- Designed to transport
  - Perishable goods
  - Small packages
- 60' Plate F Closed Box Car
  - Qty. 16 Racks
  - Two-level Steel Cargo Racks for 11,900 lbs. cargo capacity ea.
- Integrated vertical guidance rollers
- Wireless controlled Power Drive Units (PDUs)



## Load Table

- 17'x 7' Steel Load Table
- Standard equipment includes
  - PDUs
  - Roller Trays
  - Guidance & alignment component
- Safety Rails
- Electrical powered system control cart
  - Remote Controlled
  - Emergency Shut down

